

# Rolvenden & Newenden *Parish Magazine*

2025  
JULY  
ONLINE





---

# Parishes of Rolvenden and Newenden

<b>Team Rector</b>	The Revd Canon Lindsay Hammond teamrector@tentrox.org	01580 761591 07805 840493
<b>Team Vicar</b>	The Revd Jeanette Kennett teamvicar@tentrox.org	01233 758250 07888 998874
<b>Reader</b>	Judy Vinson judyannvinson@gmail.com	01580 241504

## St Mary the Virgin, Rolvenden

<b>Churchwarden</b>	VACANT	
<b>Hon. Secretary</b>	VACANT	
<b>Hon. Treasurer</b>	William Barham	01580 240852
<b>Sacristan</b>	Elizabeth Marshall	01580 241529
<b>Organist</b>	Geoffrey Davison	01580 241685
<b>Bellringers'</b>		
<b>Assoc. Captain</b>	Linda Smith	01580 241783

## St Peter, Newenden

<b>Churchwardens</b>	Frances Jones frances@peri.co.uk	01797 252563
	Hugh Edmonds hfedmonds@outlook.com	01797 252196
<b>Hon Secretary</b>	Vacant	
<b>Hon. Treasurer</b>	Jonathan Kempton jonstpeters@gmail.com	
<b>Sacristan</b>	Rhoda Smith	01580 292041
<b>Organist</b>	Frances Jones	01797 252563
<b>Magazine Administration</b>	Judy Vinson judyannvinson@gmail.com	01580 241504

Published by Rolvenden P.C.C.

*Cover Image: Day trip to Bodiam - Jo Lodge*

---





## *This month's Minister's letter comes from* **Rev'd Keith Fazzani**

*Dear Friends,*

On July 3rd we celebrate the feast of Saint Thomas the apostle. Thomas is better known as Doubting Thomas. He gained this epithet when he doubted his fellow apostles had seen the risen Christ. He said he wouldn't believe them until he had seen and put his fingers into Christ's wounds. In fact he did see Jesus and was so overcome that he did not insert his fingers into the wounds, he believed when he saw.



I feel Thomas as Doubting Thomas gets a bad press. Perhaps it would be better to call him Sceptical Thomas or even Cautious Thomas. I think there is a tendency when we hear of Doubting Thomas to condemn him. But that seems very unfair, after all, what would you have done?

I suppose we are all in the position of Thomas, we've heard the story of Jesus probably many times. Have we ever doubted? Are we sceptical? Do we simply think it is a story?

Before writing this, I thought carefully about my own journey of faith. I was brought up a Christian, and attended Christian schools until I was 18. When I went to university, I was president of Cathsoc, the university Catholic society. I was trying to think when that changed, because change it did, when I lost my commitment to Jesus.

I imagine it was sometime during my 20s. That was when I became what I will call a Christmas and Easter Christian. Perhaps my perception of God had changed and possibly my childhood view of God was simply not as important to me, or perhaps even seemed irrational. I'm not sure I ever actually disbelieved but certainly none of it was very important to me at that time.

The God I learned of at school no longer seemed as important, and perhaps I was too busy or too lazy to do very much about it. It wasn't until many years later the faith, which had always lingered, was rekindled. It was meeting a particular priest whom some of you may remember, Tony Towse, then vicar of Appledore. He showed me a view of God that was relevant to me and to where I was then. And it was he who entered me into the Anglican Church. Subsequently his successor as vicar, Lindsay Hammond, continued to grow my faith.

Eventually after those several decades of floating in the wilderness and years of training I was ordained as a priest. I am not saying everyone who finds or re-finds their faith must be ordained! But inevitably they will find God has a specific job for them. So be warned!

So as you can see from my story, my faith could be defined as having initially been found as a seed in the furnace of doubt and eventually watered and grown at the hands of companions in faith.



Thomas Merton a 20th Century Trappist monk and mystic wrote:  
"A man of faith who has never experienced doubt is not a man of faith"  
Well that's certainly true for me and probably everyone who calls themselves Christian. It is nothing to be ashamed of. We have a good friend and example in Thomas the Apostle whose doubt foreran ours. Also, if they were honest, on being told of Jesus' resurrection, his other followers didn't all believe at first, not until they had seen evidence for themselves.

Where was God when I was floating in the wilderness? Well Saint Augustine of Hippo describes the journey of faith as following Christ who keeps turning corners ahead of us, and we never quite catch up. In our journey of life which we can call a pilgrimage we follow Jesus, but Jesus turns corners and may sometimes be out of sight. Where is Jesus if we for whatever reason stop following him? Well, he's waiting for us just around the corner, pausing to give us time to catch up.

*God Bless*

*Rev Keith Fazzani*

## St Peter and St Mary Flower Rotas for July 2025

Sunday	St Mary	St Peter
July 06	Wedding flowers	Janet Broadbent Kempton
July 13	Sylvia K	Caroline Anderson Jones
July 20	Sylvia K	Caroline Anderson Jones
July 27	Sylvia K	Janet Broadbent Kempton
Contact:	Sylvia Kellett 01580 240463 SylviaKellett@eplusmail.com	Rosie Edmonds 01797 252196 rosie.edmonds@hotmail.com

Brass Cleaning at St Mary: Richard Coleman

St. Peter's Church: Normally open between 10.00 and 5.00pm. If you need access outside of these times, please contact Frances Jones or Rosie Edmonds. Should arrangers be unable to do any slots please swap with someone else and let Rosie know.

Diary Date for Flower Festival Arrangers: Meet in church on Saturday August 2nd 9.30am to discuss any queries re arrangements.

## ❖ From the Registers ❖

### Baptism

14th June Gus Harman-Goodger at St Nicholas





# The Church of England

IN TENTERDEN, ROTHER AND OXNEY SERVICES  
IN CHURCH AND ONLINE DURING JULY

## Sunday 6th July: Third Sunday after Trinity

**NB The 8am Holy Communion  
is cancelled**

9.30am St Peter's Newenden  
The Eucharist

11:00am St Mary's Rolvenden  
Celtic Morning Prayer

## Sunday 13th July: Fourth Sunday after Trinity

9:30am St Peter's Newenden  
The Eucharist

11:00am St Mary's Rolvenden  
The Eucharist

## Sunday 20th July: Fifth Sunday after Trinity

9.30am St Peter's Newenden  
The Eucharist

8am St Mary's Rolvenden

Holy Communion BCP

11am St Mary's Rolvenden

Matins

*6pm Benefice Evensong (Stone)*

## Sunday 27th July: Sixth Sunday after Trinity

9.30am St Peter's Newenden  
The Eucharist

11am St Mary's Rolvenden  
The Eucharist

*Forest Church is taking a two-month break. It will be back in September*

### And during the week:

#### Beginning the Day with God

*A ten-minute reflective service,  
online only from Monday to Saturday.*

#### Ending the Day with God

*A ten-minute reflective service, will be online  
only from Monday to Saturday.*

*Tenterden Church will be closed for*

*refurbishment until the end of July 2025.*

*Services that would normally take place in  
St Mildred's will be held in Tenterden Church  
Hall opposite the church.*

*Holy Communion will be celebrated in*

*St Michael's Church every Wednesday*

*and in Tenterden Church Hall every*

*Thursdays, both at 10am.*

*Both celebrations will last about*

*twenty-five minutes. These services  
won't appear online.*

*St Mildred's, Tenterden Online services,*

*will be found at YouTube and also can*

*be accessed through our free daily*

*bulletin, **Connect Up!** To receive*

*Connect Up! please visit our website,*

*www.tentroxchurches.co.uk, and*

*subscribe.*



**Army  
Benevolent  
Fund**

**The Band of The Brigade of Gurkhas  
With  
Cranbrook Town Band**



# **RECEPTION AND BEATING RETREAT**



**In aid of the Army's National Charity**



Picture by M.W. Stoneham

**Hole Park, Rolvenden, TN17 4JA  
6.30pm Tuesday 8 July 2025**

**Tickets £25. Children up to 16: £10.**

**Wine, Canapes, Military Stands & Superb Entertainment  
Queen's Gurkha Engineers Khukuri Fighting Skills Demonstration  
(in marquees if wet)**

**To book tickets**

**<https://www.holepark.com/events/beating-retreat/>**

**Or by cheque made out to the ABF The Soldiers Charity  
with your contact details to:**

**Peter Cook DL  
1 Chantry Place  
The Street,  
Marden, Kent, TN12 9HL**





## PRIVATE CARE TAILORED TO SUIT AN INDIVIDUAL'S EXACT NEEDS



Our aim is to help people to remain in their own homes for as long as possible and to assist those who need help due to frailty, disability or illness to live as independently as possible with comfort and dignity.

Our Private Care Service is able to provide a package of care, tailored to suit an individual's exact needs. This could give you or your relative many more years of living at home, at a fraction of the cost of living in a care home.

*Our staff are all DBS checked, fully trained and can help with both  
Personal Care and/or Domestic Care.*

We welcome Service Users who are privately funding their care as well as Service users who receive a Direct Payment or use the Kent Card.



**TOWN & COUNTRY HOMECARE LTD**

Pickhill Business Centre, Tenterden, Kent TN30 7LZ

Call today and make your life just a little bit easier: **01580 762244**

**Town & Country**  
Homecare Limited  
Caring for people in their own homes





## Gearing up for the Rolvenden Flower Festival and Art Exhibition: 23rd to 25th August

St Mary's PCC values the help we receive from our friends in Rolvenden and beyond which makes the Festival possible, and your support for the following before and during the Festival is much appreciated.

**Stewards in Church:** contact [sylviakellett@eplusmail.com](mailto:sylviakellett@eplusmail.com) or 01580 240463 if you would like to welcome visitors in church over the weekend or distribute posters and leaflets on your travels beforehand.

**Book Stall:** please bring saleable hardback and softback books to Church during July and the first week of August so they may be sorted by the team in preparation for the book stall.

*Sign-up sheets for all the rotas of helpers and stewards will be in church in early July. Thank you, Sylvia and the Festival team.*

**Flower Festival Refreshments:** Helpers are needed on Saturday, Sunday and Monday. We are hoping that the cake makers of the village will support us again, this year, by making delicious cakes to sell over the Flower Festival weekend. Any cake is good to sell from buns to gateaux. All will raise money for the Church. We also need volunteers to help staff the Village Hall over the weekend, serving teas, clearing and washing up. There will be a sign-up sheet in the Church from early July in good-time for you to confirm what time you could do and help us make a rota. *Thanks in advance for your help. Any information needed or to pledge cakes or time please get in touch with Sue Dyer: 01580240925 (078406157390)*

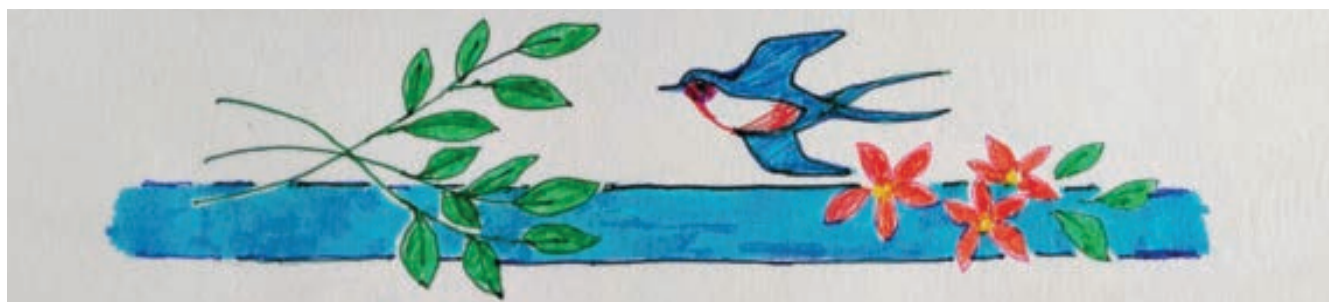
### **And over in the hall with the food, the books and the raffle there will be the Rolvenden Art Exhibition.**

The annual art exhibition will as usual be held in conjunction with the Church Flower Festival in the Village Hall on 23rd, 24th and 25th August. There will be a varied selection of affordable original paintings for sale by local artists along with our very popular huge assortment of original greetings cards. Also there will be a selection of quality crafts on sale some of which will have been produced by the exhibiting artists. **Any queries, please contact Jan Gambier on 07952 414269 or email [janpetpics@btinternet.com](mailto:janpetpics@btinternet.com).**

So, time to come along and stock up on your cards for the year along with unique gifts, or just treat yourself while enjoying the delicious refreshments available all through the weekend.

*Jan Gambier*





## A DATE NOT TO MISS!

Friends of Newenden Meadow - Field Event

SATURDAY, 19TH JULY, 1PM - 4PM

EVERYONE WELCOME!

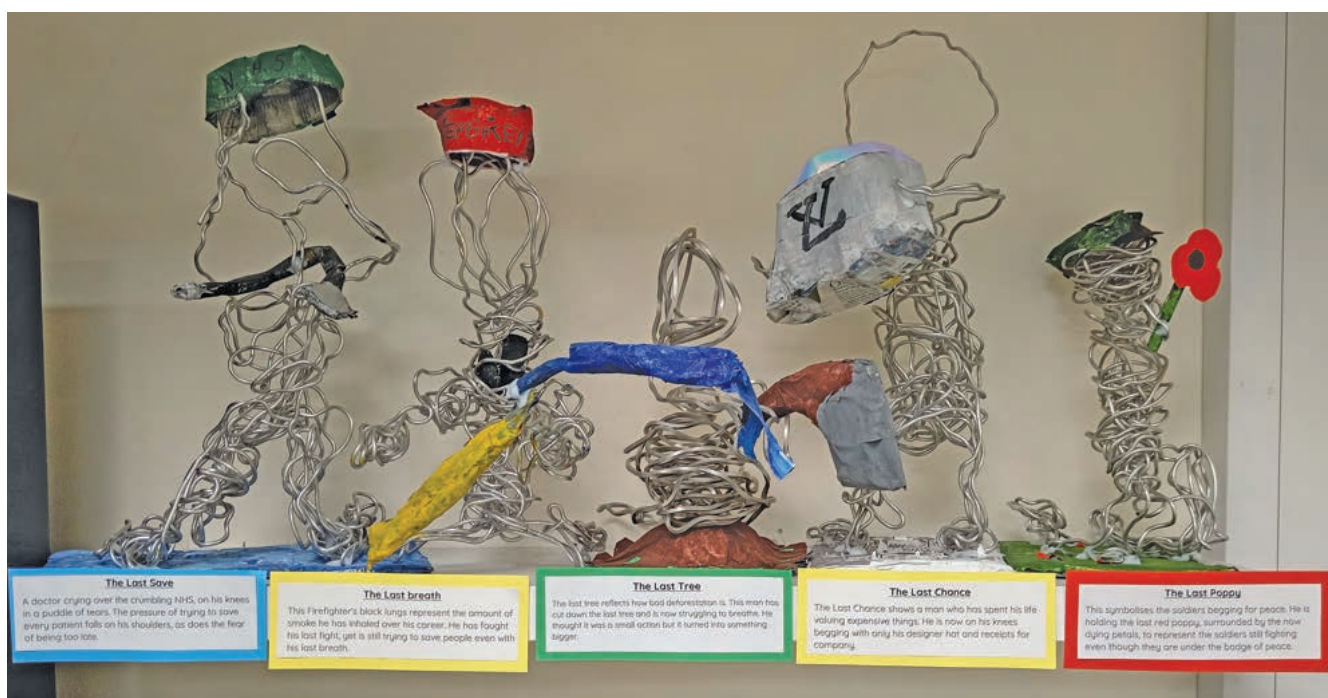


A chance to celebrate two years of The Friends of Newenden Meadow. Enjoy seeing the flowers and insects and other fauna in the Selmes Field, and wander along the lovely mown path that meanders through from one end to the other.

There will be walks with Morgan and Peter Greenhalf to look for Bumblebees, some of which we will catch and identify, and find out more about their fascinating lives. Also, a walk with Shivani Thevar of the RSPB to discover more about Turtledoves, a migratory bird that used to be found along Lossenham Lane, but is no longer seen due to a severe drop in numbers in recent years. Discover how we are trying to create conditions to get them back nesting here again. I will be walking through the field too, and pointing out the flowers that we have in the field this year and explaining their importance to pollinating insects.

There will be a Raffle with great prizes, a cake stall, and a plant stall, as well as refreshments. Please bring your pockets full of cash, and come and enjoy!

*Jillian Eldridge*



## Rolvenden Primary School

Inside Rolvenden Primary School there are always treasures to find. Displayed clearly in the foyer is a series of metal sculptures modelled from thick wire donated by a parent. The prompt for the exercise was 'The last...' and the children chose their subject. All of the sculptures in the photograph were topical. There was a doctor working hard to save lives; a firefighter, whose lungs were blackened by smoke but was still trying to save lives; deforestation and its consequences were shown by the felling of the last tree; a valuer of expensive objects, who had lost sight of his humanity, was depicted grasping a receipt; a soldier was holding out a poppy and begging for peace. This is a powerful installation, very moving.

Just before half term, there was a whole school get together, the Rolvenden Showcase. Each class performed a song or a routine. Children also individually auditioned and then put on their own performances - a bit like a talent show but everybody was able to perform. The event was staged at Benenden Theatre and all the parents went to watch. It was a huge spectacle.

This term for the performance element of the curriculum, the school is working on the summer production which will be 'Beauty and the Beast'. Every child in the school has a part to play and will develop their transferable skills. Holly Class pupils will have the big roles and the rest of the classes will play the essential supporting roles. Rehearsals involve going through lines, developing characters and perfecting movements onstage. The hall becomes the Create Theatre – there are curtains to separate the backstage area from the audience, lights are operated from the tech desk, the stage crew manage the props and scenery changes. It is a fabulous opportunity for the children to develop their core values in a theatre environment.





There are four performances in the last week of term, a matinee and three evening shows. The school is grateful to the parents who put on a bar for the evening performances and raise money for the school.

Staging a play at the end of the summer term has become quite a tradition. The school has performed 'The Lion King', 'Shrek' and 'Matilda'. The transformation of the hall into a theatre is a work of passionate whole school commitment. The creation of costumes, set design, making of props is led by the staff.

There is also a foundation performance, this year 'The Sleepy Bumblebee'. It is just the foundation year with support from the preschool who are also involved in this performance. The focuses are on the children learning to work as a team, developing skills in using lights and the tech desk. This is the younger pupils' shining moment and their parents are able to see what they have achieved.



## Information Point for the New Rolvenden Neighbourhood Plan

Here's another chance to learn what a Neighbourhood Plan is about and what is involved in producing it. Check out the Information Point boards in church - viewable seven days a week between 8:30am and 5:00pm. You will also find paper copies of the Community Survey with a box for completed surveys.

### Two points about the survey:

- It is anonymous.
- You don't have to live in Rolvenden - if you have children at the school, have a business in the village or come here to work, used to live here and want to come back - you are going to have ideas and opinions we would like to read. Still not too sure that this has any relevance for you? Back in 2018 the evidence was submitted with the first Neighbourhood Plan covering local business needs, housing needs, important public views, local green spaces, potential housing developments sites, landscaping, transport and parking, tourism, and health of the High Street.

Since then, environmental issues have become critical, and there are other issues that have become more important to community living. This time around the steering committee will be considering other factors, such as a dark sky policy for the village.

But this group can only reflect what the wider community wants. We will present you with a set of proposals and you vote. That is why we are so keen to know your thinking now, and why, as we work through the topics, we will update the Information Point to tell you how the ideas are developing. Right now, please come and have your say!

*Denise Curtain and Judy Vinson  
For the RNDP steering committee*



# The Mildred Trust:

## Rural Community Compassion in Action



The Mildred Trust (previously known as The Vicar of Tenterden's Trust) is a local charity supported by many local businesses and individuals making loyal regular contributions to the funds.

The first focus of the Trust is food insecurity; the struggle, particularly for families with children, to put food on the table. The Old Schoolhouse Larder was born from this concern. The Larder provides families with children an opportunity to bring a bag and choose a selection of non-perishable essential groceries and household and personal hygiene items, plus a voucher to use at the Tenterden Friday Market for some fresh fruit and vegetables. This became a vital lifeline for some families during the pandemic and sadly, with the subsequent economic crisis, more families than ever are seeking help as the squeeze on family finances tightens.

Having seen the cost of living crisis reach its tentacles further into our communities, it became obvious that more needed to be done to tackle food insecurity, and, at the same time, reduce waste, support the local economy, provide work and volunteering opportunities and build stronger communities by supporting projects and activities for people that are meaningful and important to them.

This was the wish list the wonderful new CEO, Beth Rice, took on board at the start of e2025. Under her leadership, the Mildred Trust has branched out with new arrangements for providing food and tackling waste. It opened the Community Shop and Community Fridge in the Tenterden





Leisure Centre, a readily accessible location, and both are well attended.

A Community Fridge is a resource which serves to reduce food waste, bringing the community together in a shared endeavour. Individuals and local food producers, who have fresh produce that is not going to be used, can pop these items in the fridge for someone else to use. Someone who discovers they have nothing for lunch (or supper or breakfast or the children's lunch box) can go and see if there is anything in the fridge to help fill a gap. Community fridges have a proven track record in driving a circular economy, reducing food waste, helping with food insecurity and enhancing community cohesion.

Similarly, the Community Shop seeks to reduce food insecurity and is open to anyone at all who might be finding the cost of living more of a challenge. It is open to the employed, the unemployed, those on benefits and those on none. It is non-judgemental, there are no eligibility criteria and customers can simply turn up with a bag and choose from a selection of store cupboard groceries up to the value of £20 and only pay £6. There is often a free selection of bread, fruit and veg and household and personal hygiene produce depending on supply.

The Community Shop and Community Fridge are run by a wonderful band of volunteers and superintended by The Mildred Trust's newly appointed Projects Manager, Louise Brangwin.



I would like to thank everyone for the lovely surprise at the Tennis Club, for birthday cake photo and flowers.

I would also like to thank everybody who called in to see me, sent cards, sent flowers for my 90th birthday.

I was very touched.

**Thank you very much  
Doreen Moore**



## Weather and Nature Notes

It has been the warmest spring on record for the UK, and one of the driest and sunniest, so unsurprisingly I only measured 30mm of rain during May. The beginning of June attempted to bring some much need rain. "In some parts of the country a months worth of rain is possible" the forecasters predicted for one day, which was vague enough to be accurate for somewhere - but not here. I have seen female blackbirds collecting nesting material again, yet I didn't see any young from their first brood, so I don't know if they failed through predation or whether the dry weather has had any impact. Starlings that are ground probers would benefit from moister soil too, they have been busy feeding their young on the lawns, their "churring" calls urging the adults to feed them more leatherjackets or other tasty morsels, an evocative sound of this time of year. I was also pleased to see young chaffinches in the garden at work, it is good to see their slow comeback after such a decline.

Insect numbers seem a bit better this year so far, the warmer drier weather





suiting them which is also good news for any creatures that eat them. I haven't seen large numbers of any particular butterflies, but I have seen a good variety, which is always pleasing. Chirpy little house sparrows are busy foraging around the garden and around window frames etc for little insects like aphids, ants and spiders for example to feed their young. Although the adults are more omnivorous, the young need insects. The photo shows a ladybird larva, those and lacewing and hoverfly larva also eat a huge amounts of aphids, so give them a chance to eat the aphids on your plants before you squirt them off with water to build up the numbers of good guys.

All insects are here for a purpose although it can be harder to appreciate some, a case in point being horseflies. They have a reputation for being a biting nuisance but it is only the female that bites the same as with mosquitos; the female requiring a blood meal to develop her eggs. The male horsefly feeds on nectar thus pollinating plants, and even the biting female is a potential meal for something larger. I saw one land on a pondside plant of mine; there are quite a few different species that can be difficult to tell apart, but to my knowledge they all have large eyes that are often patterned and iridescent which is a distinguishing feature of horseflies. As you can hopefully see from the picture she had spectacular large purple and green eyes; I was so focussed on her eyes that until I looked at the picture I didn't notice she was laying eggs.

I have been busy this month so have not had time to fully appreciate all it had to offer, it seems incredible that May has gone by in a flash and we are days away from the longest day already. Some flowers have come and gone for another year, but the gardens and countryside are still verdant so we will see what summer brings.

*Hazel Beaney*





## Make the most of your day with our Summer Explorer

Make the most of your day in **Bodiam**. Arrive at 9.35am by train from  
Tenterden (dep 8.45am) or Northiam (dep 9.20am).

Or enjoy an all-day visit to the beautiful market town of **Tenterden**. Arrive at  
10.40am by train from Bodiam (dep 9.50am) or Northiam (dep 10.05am)

*Your Freedom Ticket is valid to return by any of the trains that day,  
so hop on board with us!*

**JULY**

23rd, 30th

**AUGUST**

2nd, 6th, 9th, 13th, 16th, 20th, 23rd, 27th, 30th



**KENT & EAST SUSSEX RAILWAY**

Tenterden Town Station, Station Road, Tenterden, Kent TN30 6HE

[www.kesr.org.uk](http://www.kesr.org.uk) • 01580 765155







Red Priest  
12 September



Timothy Rundle  
Oboe Recital  
19 September



Wine tasting  
20 September



Pasadena Roof  
Orchestra  
27 September



Harry The Piano  
8 October



Sherlock Holmes:  
The Hunt For Moriarty  
10 & 11 October



The Real  
Manhunter  
17 October



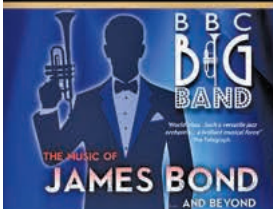
Spot's  
Birthday Party  
23 & 24 October



London Concertante  
Four Seasons  
30 October



Blazin' Fiddles  
9 November



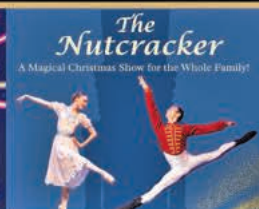
The BBC  
Big Band  
22 November



Jess Gillam  
11 December



Lost in Music  
12 December



The Nutcracker  
13 December



Faulty Towers  
Dining Experience  
13 & 14 December



Christmas Brass  
Concert  
19 December



NT Live  
25 January



The Nat King Cole  
Story  
13 February



Ben Fogle  
23 February



Attention All  
Shipping  
26 February

In partnership with





# Whatever you want to store...

...for whatever reason – business, house sale and purchase not coinciding, travelling, house building work, paperwork overload or just “de-cluttering” to sell your house more quickly – we offer a friendly and flexible service in Cranbrook.

With competitive rates, secure storage all on one level and hassle free 24/7 access, contact us now!



**01580 713231**  
**[www.barn-store.co.uk](http://www.barn-store.co.uk)**



Your local installers and repairers of:

## Automatic Gates

We can install, repair and offer maintenance on all automatic gates

We also supply and fit high quality CCTV systems

Call Dan on 01580 242901  
**[www.afsecurity.co.uk](http://www.afsecurity.co.uk)**



Elevate your outdoor space with premium materials from

**Order online:**

[www.gardenscapedirect.co.uk](http://www.gardenscapedirect.co.uk)

Tel: 01797 253666

Email: [sales@gardenscapedirect.co.uk](mailto:sales@gardenscapedirect.co.uk)

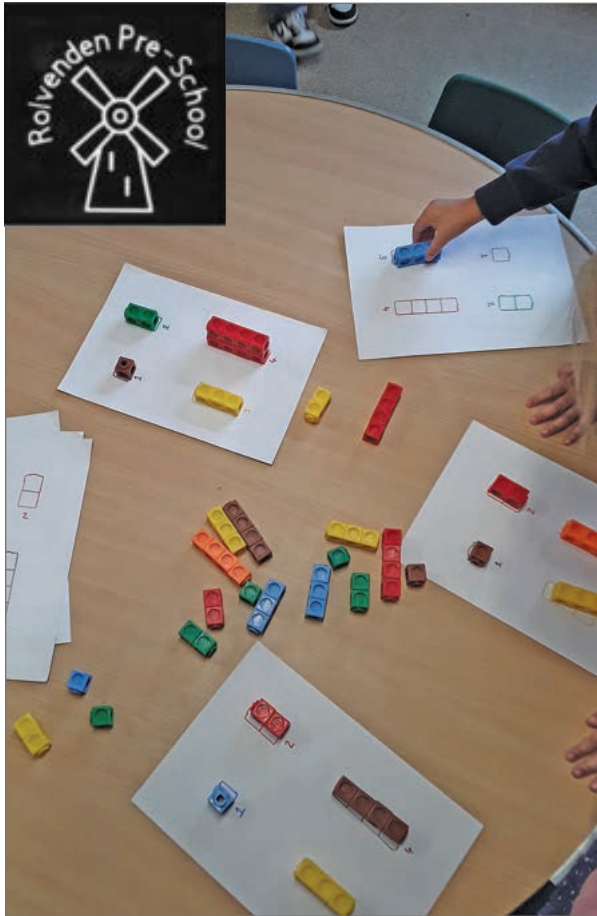
**Gardenscape**







# Rolvenden PreSchool Report



This month sees the end of the school year fast approaching and we are very busy at preschool with transition work for those who will be leaving us to start Primary School. We are lucky enough to be able to make regular visits to Rolvenden Primary School where the preschool children get to spend time with Mr Heath and his current Reception Class. We will take part in their end of year play at the end of June, which will have hopefully been a wonderful success by the time you read this piece!

We are busy in the garden growing our own strawberries, peas and sunflowers and we are looking forward to our Garden Safari fundraiser on 5th July in conjunction with the Rolvenden Gardening Society. We have also

made shell pictures to enter into their Summer Show.

Our curriculum is ever changing as we introduce new ideas, follow the children's interests and allow room for repetition as the children take their time to master new skills and consolidate their learning. Recently we have seen many of the children enjoying a deeper understanding of maths and writing as they explore early writing skills and group games such as number block bingo and singing counting songs together.

As we prepare to say farewell to the school leavers, we are also preparing to say welcome to our new starters who will be joining us in September. We have an open morning for new starters on Friday, 11th July between 10am and 12pm - if you would like to come along to enquire about a space for your child you are welcome to drop in or contact us at preschool any time on 07729 718 181 or email [rolvendenps@gmail.com](mailto:rolvendenps@gmail.com).

***Take a look at our website: <https://rolvendenpreschool.yolasite.com>  
our facebook@rolvendenpreschool***

***Contact us on [rolvendenps@gmail.com](mailto:rolvendenps@gmail.com) with any questions  
or to arrange a visit.***



# FOOD, GLORIOUS FOOD!

## The Radish



The humble little radish is often only thought of as a vegetable to slice into salads; it actually has quite a history going back thousands of years.

It is one of the oldest cultivated vegetables, thought to have originated in Southeast Asia. They are known to have been grown in Egypt around 2780 BC when they were part of the rations for the workers on the Great Pyramid along with garlic and onions to maintain their health and strength. Black radishes were the first to be cultivated, the white radishes were long and tapered and are mentioned in Europe in the sixteenth century.

The Greeks and Romans recognised the value of the radish. The Greek physician, Androcydes, suggested eating radishes to balance the effects of alcohol.

They have been eaten in Britain for more than a thousand years. In Shakespeare's day they were eaten raw with salt as an appetiser to stimulate the appetite. Their historical and traditional use was to clear the taste buds before food. In one of his plays, Ben Jonson sends his characters off to a tavern to have 'a bunch of radish and salt to taste our wine'. Levens Hall, an Elizabethan house outside of Kendal, would hold a Radish Feast each spring, serving radishes with brown bread and butter, to mitigate the effects of the strong ale that was going to be drunk.

In Europe the radish is seen as a minor salad plant, whereas in China and Japan they are considered an important root vegetable, to be eaten raw, preserved, cooked or made into an elaborate decorative garnish.





Radishes are surprisingly nutritious and very low in calories, a cup containing around 116 grams of raw radish contains about 19 calories making a great snack. They are rich in vitamin C, the same amount giving about 29% of the recommended daily intake to help boost the immune system, aids in collagen production and protects against oxidative stress. They are a good source of fibre, support digestion, and help regulate blood sugar. They are also rich in antioxidants, especially anthocyanins and gluconates which have anti-inflammatory and potential cancer fighting properties. As they are made of 95% water, they help keep you hydrated and support healthy skin. They also contain potassium, vital for heart and muscle function, and small amounts of calcium, magnesium and iron. Modern research suggests that they can support liver function, aid digestion, control blood sugar and support the heart.

There are many varieties of radish, some suggest over one hundred. They can be put into categories by their shape, round or elongated and their colour, red, pink, white, purple or yellow. Their flavour goes from mild to spicy. Some of the most common are:

- Cherry Belle, the classic red round found in salads
  - Daikon is a long white variety with a mild flavour often used in Asian cookery
  - French Breakfast, which is a long red slender radish with a white tip that can be eaten raw or cooked
  - Watermelon radish has round wide shapes, as their name suggests, with a mild pepper flavour
  - Black radish are round with a black skin and have a strong peppery flavour.
- So radishes can be eaten raw or cooked, they are very versatile, their peppery flavour can be softened by cooking or used to add a spicy crunch in fresh dishes.

■ An easy salad can be made from thinly sliced radishes tossed with rocket, olive oil, lemon juice and a shaving of parmesan, very simple but good.

■ Pickle some radishes for a zesty and colourful crunch to sandwiches, salads, burgers etc. Just put sliced radish in a bowl with vinegar, sugar, salt and spices and refrigerate for a few hours.

■ They can be roasted with, garlic, olive oil and herbs, this makes an excellent side dish. Add them to your slaw with a yogurt dressing.

Who would have thought the little radish could provide so much. I always think of them being eaten by Peter Rabbit in Mr McGregor's garden!

*Lavinia*





**Friends of Saint Peter's Church Newenden**  
**Arty Crafty Garden Cream Teas**  
**in a peaceful garden**

**Sunday 20th July - 2 to 5 pm**  
**craft stalls, art sales, exhibitions, raffle**



**Priory Stones, Lossenham Lane**  
**Newenden TN18 5QQ**  
**With artist Caroline Anderson's studio**  
**to visit as well**  
**A delightful afternoon awaits!**





## A “Blow-in’s” Journey



At 59 I passed my driving test. Living in London for 40+ years has made me lazy. No-one drives, we are a Tube, Uber or Bus ride from our next destination but it's a soulless transaction with, God forbid, any eye contact. So, when the “Big move” to the country was upon us, I knew I had to get my derrière in gear and learn the ways of the Highway. I'm wobbly, hate red lights and roundabouts - certainly not motorway-ready by anyone's standards. And although I've now mastered, to some degree, county lanes getting to Rolvenden, Tenterden shops, the Vets and Headcorn, when Tunbridge Wells called - I found myself heading for the 9.08 bus from outside The Bull in Rolvenden.

I was painfully early (aware that the next bus was an hour later if I missed it) so much so, that the bus first passed me on the opposite side but when my cheery driver pulled up with a “Still here?” I was delighted to be acknowledged. This driver also kept herself busy crocheting when waiting for her customers to board if she reached her stop early. I was impressed. As a rookie driver no one is even allowed to talk to me for fear of distraction. The locals seemed to not only know the driver's name but that of practically everyone on the bus.

There was much community chatter and shy smiles my way. I earwigged for forty minutes of twisty, pot holed roads that flung me from side to side. Tunbridge Wells truly delivered, and after shopping I waited for the 297 home, tired and weighed down with bags. The driver, who picked us up just outside the station, was Manuel. He is a bus driver of dreams - knows his customers, jokes with everyone getting on. A wife boarded the bus, waiting for her husband to catch up, she was clearly irritated she'd had to wait for him, complaining loudly. Manuel said, “Let's have some fun,” and closed the doors pretending to drive off - the husband had to jog to catch us. Slightly rattled, breathless, face a picture when he realised his wife was the root cause behind the mischief. We all laughed, in on the joke, and I thought - this is what we're looking for, this is why we moved.

When I disembarked, Manuel looked at me and said, “Are you Irish?”

“Yes!” I replied, my red hair and freckles clearly betrayed me.

“Welcome,” he said. “Nice to have you on board.” I skipped the rest of the way home.

*Flik Dennison*



# Reflections of a Curate



*As St Mildred's is closed at the moment, the farewell service for Andrew and his family was held in St Mary's Rolvenden. Someone was heard to remark, 'I never knew it was possible to have such joy and sadness at the same time.' It was a great send-off to a family who will be sorely missed.*

exercise the first three years of my ministry under the guidance and supervision of others.

Now that my curacy has run its course, I am required to move into a permanent position, typically within parish ministry. This will take the form of becoming the incumbent of a parish or group of parishes. Following a successful interview back in March, I have now been appointed to such a post. In mid-June I will be licensed and installed as Priest in Charge of the Blofield and Broadside benefices in the diocese of Norwich. So, as my time in Tenterden, Rother and Oxney draws to a close, I find myself at a point of reflecting on my time here and looking ahead to my future ministry.

A training post is transitory in nature; its ultimate aim has been to provide me with experience and learning opportunities in preparation for taking up a position of responsibility. For this reason, one of my reflections would be that the dust has never truly settled during my time here. I have certainly established many links and relationships with people and places, become integrated into our team ministry and thoroughly enjoyed making my home among our communities. However, these things have taken place against the backdrop of a time limit. This means that on one hand it will be incredibly difficult to leave, but on the other it feels exciting and liberating to have the chance to settle into a more permanent role which offers me and my family some stability.

I look back over my ministry thus far and can clearly see ways in which I have grown and developed, both in my vocation as a priest and as a person. The sheer breadth and depth of ministerial life has presented me with new

Over the past three years I've had the privilege of serving as Assistant Curate to the Tenterden, Rother and Oxney group of parishes, ministering to our communities and to our nine church congregations.

I was ordained deacon at the start of my time here, ordained priest a year later in 2023, all the while working as part of a team of ministers led by my clergy colleagues Revd Lindsay Hammond and Revd Jeanette Kennet - my position as Assistant Curate has never been a permanent post. It has served as a chance for me to





opportunities and challenges for which I am very grateful. Although there are times of difficulty, it is also an incredible privilege for which I am extremely grateful. Of course, this journey of growth will continue and I will by no means enter into my incumbency as a fully-formed minister. Nonetheless, I feel well equipped and suitably prepared for what comes next and that is thanks to the people who have surrounded me, encouraged me and supported me over the past three years.

As I look towards the future, I find myself conflicted and uncertain. We live in turbulent times, in an age when the church is struggling in all manner of ways. Cynicism and pessimism are ever present dangers when considering the future of the church and yet I am encouraged and enthused by so much. The message of the Christian faith is one of love, meaning and belonging, things which are yearned for by so many. It is the offering of this message that I have seen carried out so effectively in the life of our churches here in Tenterden, Rother and Oxney that gives me hope for what is to come. For the real church isn't the lumbering institution that struggles to keep pace with our rapidly changing culture, nor a faceless entity which has no relevance to today's society, nor a self-absorbed body that's cut off from the rest of the world. The real church is ordinary people moved to extraordinary loving action because of their faith. As a priest I have the privilege of tending, nurturing, empowering and leading these people. This is what I've had the opportunity to do during my time here and it is this that encourages me when I look to the future.



*St Andrew's and St Peter's Blofield, one of Andrew's eight churches.*

And so, for the blessings which you as the people of these parishes have bestowed upon me, I thank you beyond measure. I will in turn do all that I can to be a blessing for those to whom I am being sent. *Rev'd Andrew Tapsall*

## **Greetings from Sandhurst RBD**

### **17th Memorial Recital**

The performance is Saturday, July 26th at 3pm when the well-known pianist, Daniel Grimwood, will be playing at the garden party recital. He will be performing Rachmaninov, Widor and, of course, Henselt.

Minimum donation £22. Tickets are available from me: 01580 50384. **Advanced bookings only.**

*Cheques should be made out to Gillian Davis plus s.a.e. Thank you.*



# Rolvenden Parish Council Report



The reorganisation of councils in Kent and Medway will mean Councils in their current form will be replaced by Unitary Authorities with responsibility for all services across a wider geographical area. There is much work to be done by the current Authorities to build a comprehensive business case for submission by the Government's 28th November deadline.

ABC has reassured us that a key part of that process will be a public awareness campaign to ensure residents and businesses fully understand the potential changes that Local Government Reorganisation (LGR) will bring. To ensure residents can be kept up to date ABC have created a LGR page on their website, <https://www.ashford.gov.uk/your-council/devolution-and-local-government-reorganisation> and the latest edition of the 'Ashford For You' magazine features an article explaining the latest position, and what this could mean for residents. The Parish Clerk is attending various meetings and events on the subject to learn what these changes mean for the Parish Council.

The period of Exercise of Rights commenced on the 3 June 2025 and closes on the 14 July 2025. If you wish to inspect the accounts for the last financial year during this period, please do contact the Clerk.

The Village Hall continues to struggle with insufficient trustees. Please do contact the Clerk who is the acting Secretary if you could spare some time to get involved.

An application has now been submitted to the Land Registry for the registration of the land title for the Thoburn Trust parkland which had not been registered, as thought, in 2022. The Parish Council has also begun the process of trying to register the Thoburn Land Trust with the Charity Commission.

The residents at Monypenny have recently met with ABC regarding new proposals for the site. The Parish Council has met with the residents and listened to their concerns and remains committed to supporting them and achieving the best outcome.

Please do get in touch if you have any questions or suggestions for the Parish Council.

*Louise Goldsmith, Parish Clerk,*  
*email: [clerk@rolvendenparishcouncil.gov.uk](mailto:clerk@rolvendenparishcouncil.gov.uk)*  
*Tel: 07900 693572*





**Rolvenden History Group**

Friday, 4 July 2025

# **Eat Your Carrots!** **The Story of British Radar**

Guy Bartlett



They say truth is stranger than fiction. Indeed, it was here. As Britain faced Nazi invasion, it became clear the Royal Air Force was out-numbered 4:1. The Government turned to scientists for a solution. They asked for a Death Ray - what they got was more advantageous. This is the story of how two unlikely men, and a mathematical formula, changed the tide of the war.

Venue: St Mary's Church, Rolvenden

Coffee and biscuits

7.15 pm for start at 7.30pm

Everyone welcome - Non-members: £4

<https://therolvendenhistorygroup.wordpress.com/>



## Monypenny News: Residents Oppose New Development Proposals by ABC

Residents are seeking parishioners support for their campaign against the new proposals from ABC to redevelop the present building with a mixed development of affordable homes and apartments. The latest proposals will entail all residents being rehoused, against their wishes, somewhere unknown in the ABC catchment area, a situation which the elderly residents consider unsympathetic as there are less intrusive alternative options available that should be considered by ABC.

You can support our campaign by objecting in writing to the Planning Application in its present form when it is submitted. see [www.savemonypenny.com](http://www.savemonypenny.com)

**Meanwhile, we are a community that really works, as you can see: Activities:**



Julie W, our housekeeper, invited all residents to participate in a Giant Sunflower Competition which attracted entries from eight residents. At a sunny spot at the rear of the building, a raised bed was prepared and seeds were planted. They are growing well and the grower of the tallest sunflower will be awarded a prize.

On 9 June residents and Staff gathered to prepare ten hanging baskets with bedding plants for our annual display around the main building. Plants were financed by ABC and should be in full bloom for the summer season.

Ashford Borough Council are again holding a garden competition this year and several residents will enter. The exact date to be advised.

Monypenny is hosting the Garden Safari which has been organised jointly by Rolvenden Preschool and Rolvenden Gardening Society for Saturday, 5 July. The lounge will be a base for refreshments all day. There will be a raffle and a plant stall. The gardens of residents from Monypenny's flats and bungalows will





be available to view. Garden entry tickets are £5 and available from The Barn Hairdressers, Falstaff Antiques and myself at 4 Monypenny.

**Trips and Days Out.**

The two minibus trips to Hollywood Bowl in Tunbridge Wells were a great success and enjoyed by all. This trip will be repeated in September and all will be welcome to join us!

Good weather made for a successful minibus day trip to Eastbourne on Wednesday, 11 June for participating residents and villagers. Fish and chips, ice cream, and the Pier and shopping appealed to us all!

### **Proposed Trips:**

Residents always have first refusal for seats but we welcome non-residents to join us on all trips as there is often availability. The following Day Trips are scheduled below:

- Seal Safari Boat Trip in Rye Harbour followed by a fish and chip lunch. A few seats are still available.

- Day Trip to Seaford with ample time to explore. Seats are still available.

For full details contact [grahamtiltman@gmail.com](mailto:grahamtiltman@gmail.com) or call 01580241006.

**Weekly Events.**

- Wednesday 2-4pm: afternoon tea and sumptuous cakes in Monypenny Lounge. Residents, £2 and non-residents £3 per person. Come and have a natter with us all.

- Thursday, breakfast at 9am. Residents only.

- Thursday, 3pm to 5-30pm: Kurling.

All are welcome to join us for a non-strenuous game of New Age Kurling for an hour or two and then stay for fish and chips which we collect from the local van. This is a very pleasant fun afternoon for all: tea/coffee 50p, food from fish van is at their normal charges.

### **Look out for our quiz, film and horse racing nights**

Our Annual Macmillan Cancer Coffee Morning will be held in the Monypenny Lounge on Friday, 26 September. Let's see if we can equal or beat our last year's figure raised of £700. Thank you for your continued support for this worthy cause which affects us all in some way or at some stage in our lives.

*Graham Tiltman*

### **Beryl Mulot**

Nearly 2 years after Arthur's death, Beryl passed away in Lindau Residential Home, New Romney on 29 May at the age of 93.

Beryl and Arthur arrived in Rolvenden in 1994 and were involved with village life for many years - the Primary School, the WI and the Gardening Club. Rather than a traditional funeral service, close family members will hold a Celebration of Life for Beryl.



# Rolvenden Garden Safari

**Saturday July 5th 10.30am - 4.00pm**

**Tickets/Map £5 on sale from June 2nd at  
The Motor Museum, The Framers shop  
and Monypenny**

**We have 9 gardens for you to visit**

**Refreshments, Raffle  
and Plant sales in  
Monypenny lounge  
from 10:30am**







# NEWENDEN VILLAGE HALL

*- Boot Fair -*

ON  
SATURDAY, 26TH JULY



GATES OPEN FROM 9AM - 12.30PM  
CARS £10, CARS + TRAILER £15, VANS £15

NEWENDEN CRICKET FIELD, LOSSENHAM LANE TN18 5QQ

# NEWENDEN

## -Fun Day-

ON  
SUNDAY, 27TH JULY  
12-5pm



## THE EXTRA ATTRACTION



CONDUCTED VIEWING SESSIONS THROUGHOUT THE AFTERNOON -  
YOUR OPPORTUNITY TO HAVE A GOOD LOOK INSIDE THE NEW HALL





# Newenden Fun Day

**pop the date in your diary:**

**Sunday July 27th from 12:00 Noon to 5:00pm**

The Fun Day Planning Team is busy assembling the ingredients to fill the space with traditional things you would expect to find at a Village Summer Do.

We now know the extra help we need from our fellow Newenden Residents. Some of you have already been asked and said Yes!, which is wonderful. Requests for more help will be in the Newsletter to be delivered to all Newenden households. The newsletter will also have details of when on the day you may visit the new Village Hall and see exactly what has been achieved inside.

let's not forget the Friends of St Peter's Ducks. The excitement is rising inside the big dark where they have been since last year's race. Soon there will be the annual number inspection. Then comes thinking tactics for the different wind and water conditions they may encounter. They really do want to deliver a memorable race.

**You can buy a duck, or ducks, on Race Day or beforehand from:**

- In Newenden call Alan Seal 07970 134611  
or Christine Wright 07751 459685
- In Rolvenden call Judy Vinson 01580 241504
- Alternatively, the Lime Wharf Café or the Star Rolvenden will take your money.

## An Apology

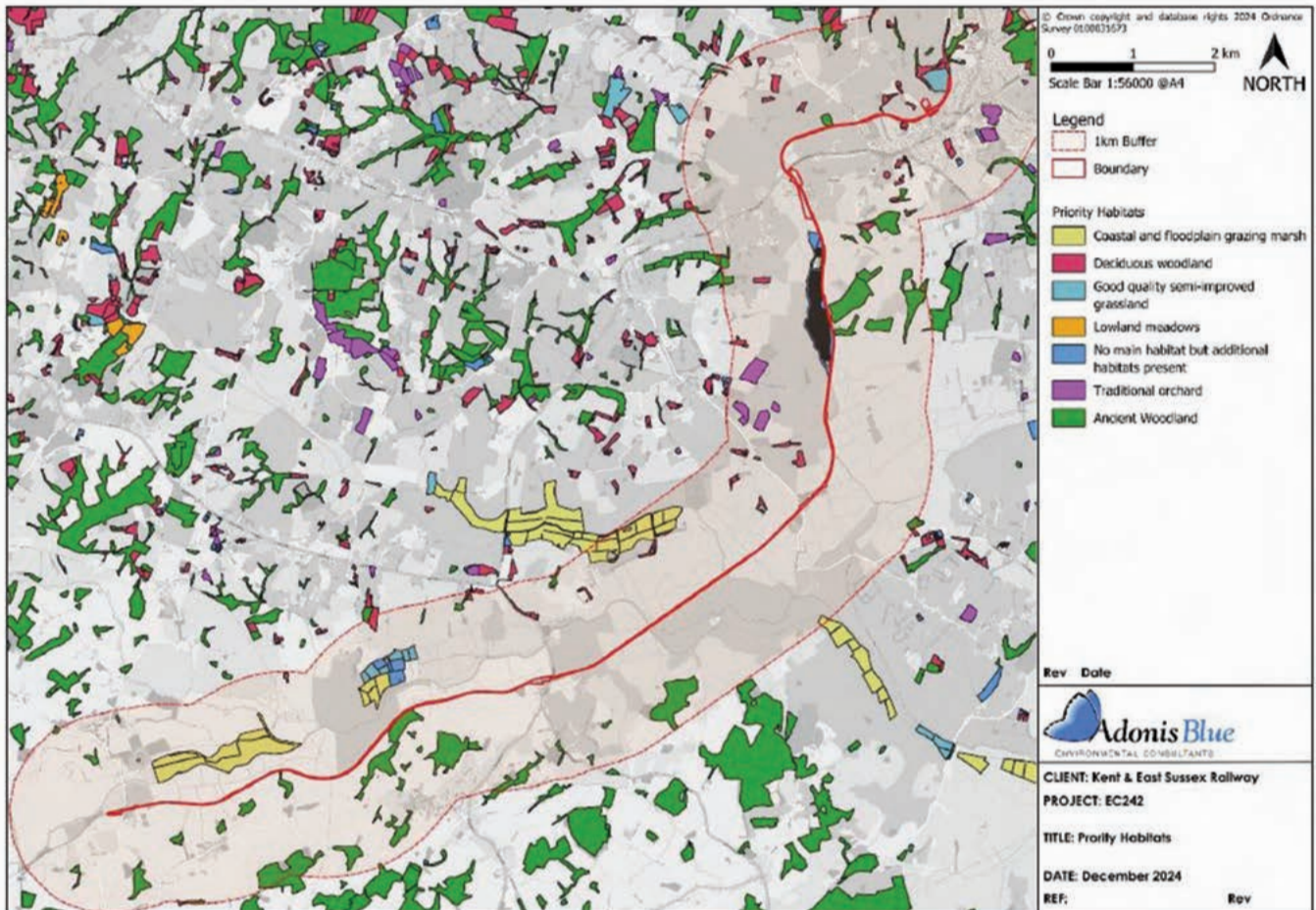
### Payments for subs and donations

Last month readers of the printed magazine received a request to pay their subscription and online readers were asked if they would make a donation.

Thank you to everyone who paid or donated.

We must apologise to anyone who attempted to make an online payment on or after 7th June and experienced difficulties.

Our bank planned to be offline for that weekend, implementing a major system overhaul. It did not go quite as smoothly as planned and some people may have been unable to make a payment. The system is now up and running and we can see payments being made. So if you did have a problem and have not had another go, please do because everything is working again.



## A Rich Green Corridor

Imagine. Just imagine. A rural byway winds and unfolds between banks of flowers and the successive blossoms of blackthorn, hawthorn, elder and dog rose. Traffic is sparse. In winter it is almost deserted and even in mid-summer passing traffic rarely exceeds a dozen a day. Passers-by are even rarer. Almost undisturbed, birds perch, call, rest between nesting or feeding. Clusters of blooming flowers attract swarms of damsel flies and butterflies.

Can you picture it?

Since the publication of my article about Biodiversity on the Kent & East Sussex Railway in the November edition of Watch on the Weald, we have received the final report from Adonis Blue, the KWT Consultancy Services. Their Biodiversity Enhancement Plan focuses on advice for managing the variety of habitats along the line, consolidates on 2023's breeding bird and bumblebee surveys and adds the results of the 2024 reptile and butterfly surveys.

In the previous article I reported on the numbers for red and amber-listed bird species. The new report tells us that the route supports eight birds on the Kent Local Strategy Priority Species list: corn bunting, lapwing, linnet, marsh tit, nightingale, turtle dove, yellow wagtail and yellowhammer. The last, with its sixty territories, is clearly in abundance compared with national decline.

The Bumblebee Conservation Trust's report recorded a final tally of 103





plants (flowers, shrubs and trees) and offered specific advice on managing sections of the line for key species and clear planting advice for enhancing biodiversity and supporting bumblebees at stations. In April, we ran a special train so that the BBCT could help us identify sites for special protection.

2024 was a poor year for butterflies and we only surveyed the line once. Nevertheless, at least fifteen species were identified including Priority Species small heath. I know from having walked the line many times with our bird surveyor in 2023 just how much more abundant butterflies can be. That year red admirals were prolific. Our surveyor also noted damselflies and dragonflies: large red damselfly and common blue damselfly; emperor dragonfly, brown hawker, four-spotted chaser, banded demoiselle and ruddy darter. Given the



number of lineside ditches and water crossings, we know these are abundant. Hence, too, the presence of hobbies.

Reptile surveys produced extremely fertile results. This involved laying mats at all the stations and returning between June and September to count individuals. The predominant species was the slow worm, thirty-four of which were identified on 28 June – rated as Exceptional. The greatest profusion of slow worms, male, female and juvenile were found at Rolvenden due to the

dense scrub and marginal grassland there. The second most prolific was on the margins of the scrub behind the lesser used up-platform at Northiam. A very small number of grass snakes and lizards were also found.

Independently, one of our supporters, John Sinclair, has begun bat surveys at Tenterden, Wittersham Road and Northiam stations. Common and soprano pipistrelles have been identified at all stations; brown long-eared at Tenterden and Wittersham Road; and noctule bats at Wittersham Road and Northiam. This lends weight to the advice that in addition to bird boxes, many of which are already sited at stations, we should instal bat boxes. John has yet to survey Bodiam station, but given the sizeable roosts in the Castle, we should not be disappointed.

In appendices to our report, there are lists of species known to be within one km of the line including bats and birds and maps which show Priority Habitats within one km of the line. These help to confirm how the 10.5 miles of railway provides a vital biodiversity corridor.

**Keith Barron**



# **WORDS**

**SAT 23<sup>RD</sup>   S K   AUG  
THE   E P   2025**

# **MUSIC**

**Words and Music is back this summer!**  
**Book now to enjoy another choice selection of**  
**international poets and artists**  
**in the delightful surroundings of Frensham Manor,**  
**Rolvenden Layne.**  
**A whole day of poetry and music, with local food,**  
**beer and cider.**  
**You will see some of today's most interesting poets,**  
**and some of the most beguiling contemporary**  
**musicians,**  
**performing across two stages.**

This is a family-friendly event - there is plenty of space in the garden for kids to play, and there will be a free workshop for kids (5 upwards) run by youth arts group Caper.

(Accompanied kids under 12 do not need tickets.)

Check out Facebook [@skeparts](#) and our website [arts.theskep.uk](https://arts.theskep.uk) for updates.

Tickets available now from: <https://wegottickets.com/event/661705>





# Rolvenden Neighbourhood Watch

July 2025

Our focus this month is on fire prevention, arson and wildlife crime: catapulting.



## 1. Fire Prevention and Arson



Please be on the lookout for signs of fire and report smoke, as it may be a fire out of control or deliberately started. Below is some advice from Peter New, Retired Assistant Chief Officer (Head of Operations for Kent Fire Brigade).

**Please pass on the following advice:**

- If you are with friends who want to start fires, leave them, go home and report.

- If you see any fire, no matter how small, call the fire brigade. It builds up a picture of events. (The police will also become involved with arson. People who start fires in waste bins and such items can progress to worse crimes.)

The recent tragic death of two fire fighters in Oxfordshire is a sharp reminder to us all of the dangers of fire. **ARSON IS A VERY SERIOUS OFFENCE. PLEASE UNITE TO STAMP IT OUT AND KEEP RESIDENTS AND PROPERTY SAFE.**

### At home

Rubbish is a ready source of fuel for an arsonist. Fire can spread quickly to nearby homes and buildings putting lives at risk.

- Only put rubbish and recycling containers out on collection days
- If you miss a local collection, contact your local council to report it
- Never store rubbish or anything that can catch alight in corridors, stairwells or escape routes
- Keep communal bin stores secure and well lit
- Store recycling containers a safe distance from buildings
- Don't overload skips and get them removed when full

Attention to security measures is one of the best ways to prevent arson.

**Make sure your property is secure including any derelict buildings.**

- Keep entry points to buildings secure, including sheds or garages, perimeter walls, fencing and gates
- Board up and secure unused or derelict buildings
- Prevent intruders and trespassing by making sure perimeters and buildings are well maintained and any damage is repaired as soon as possible
- Consider installing security systems such as CCTV, alarms and security lighting
- Keep any flammable substances store safely and securely, not left in the open
- Consider fitting a fire reduction letterbox

### Fly tipping and abandoned vehicles

- Report fly-tipping (illegally dumped waste) to your local council to get it collected quickly



- Report abandoned vehicles to your local council, as they can become a target for arson. They may cause damage to the environment from oil spills and the toxic smoke produced in a fire. Water used during fire-fighting may also become polluted and affect sub-soils and water drainage systems
  - Report suspicious behavior to the police 101 (details also at the end of my article using live chat which can be quicker) and Crimestoppers: 0800 555111 with information. **Always call 999 in an emergency.**
- For Ashford Borough Council, use their online reporting form or call their urgent telephone number at 01233 331111 and use this link:  
<https://www.ashford.gov.uk/environmental-concerns/report-a-street-issue/fly-tipping/>

### **Fires in parks and open spaces**

Fires in grasslands, wooded areas, sports grounds and allotments can kill wildlife and cause widespread damage as well as polluting the air.

If you're responsible for any green or open spaces:

- Keep any paths well maintained and trimmed back. This allows fire brigade vehicle access and the paths can be used as a fire break
- Regularly check and maintain water supplies for fire fighting
- Ensure there are no gaps, holes or damage or access points in perimeter walls or fencing
- Lock the gates out of hours
- Consider increasing security patrols at peak times: April – September
- Rubbish or recycling containers should be placed on firm, solid ground and regularly emptied of grass, plant and tree cuttings

## **2. Wildlife Crime: Catapulting**



At the end of May, I was alerted to a report of a boy catapulting birds in the Tenterden area. I have escalated this issue to my contacts within the police, Neighbourhood Watch and the community. If you see this crime in progress, call 999. Try to get evidence without putting yourself in danger including the date, day, time,

location, description of those involved and what was happening including photos/video footage. Here is a useful link to Wildlife Crime:

<https://www.wildlifetrusts.org/wildlife-crime>

---

### **Reporting crime to the police**

Serious crimes in progress dial 999, other incidents via 101 (phone) or online using Live chat: <https://www.kent.police.uk/contact/af/contact-us/>

Hearing or speech impairments. If you are deaf or have a speech impairment and you've pre-registered with the emergency SMS service, you can use the textphone service: 18000 or text 999.

*Siân Reeves*

*Rolvenden Neighbourhood Watch*





# Parish Magazine Essential Information:

Articles and supporting photographs: email to judyannvinson@gmail.com. Photos for the cover should be emailed as a jpeg in colour or monochrome to Trevor Lodge on stmaryrolv@aol.com. To keep the cover photos in tune with the month, Trevor likes to keep seasonal photos on hold waiting for the season to come round the following year. Any keen photographers who want to contribute, please send your photos to Trevor.

**THE DEADLINE FOR THE AUGUST ISSUE IS 5:00pm**

**TUESDAY 15TH JULY**

**Note for distributors: ★ Rolvenden Magazines available for collection on Saturday 26th July. ★ Newenden Magazines available for collection on Sunday 27th July.**

The online version will be available from 1st August accessed via the Parish Council websites for Newenden and Rolvenden Parish Councils, for which arrangement we are most grateful. *Judy V*



## Justine Oliver Foot Care Practitioner



Home visits, nail trimming, corns, calluses, hard skin, thickened nails, and more

**Justine Oliver - Telephone: 07760 340119**

**email: justineoliver.fhp@gmail.com**

**Fully insured ~ Registered ~ DBS checked**



## The Great Barn Halden Place, Rolvenden



This magnificent 18th century barn is full of character and rustic charm. Located to the East of the Hole Park Estate amid rolling farmland and orchards, the Great Barn provides the ideal blank canvas in which to create your bespoke wedding.

Registered with KCC for Civil Ceremonies.

[www.greatbarnweddings.com](http://www.greatbarnweddings.com)

[info@greatbarnweddings.com](mailto:info@greatbarnweddings.com)

Hole Park Estate, Rolvenden, Kent

### **Organisations here to help**

EC30, a coffee shop and so much more! For more information email: [info@ec30.co.uk](mailto:info@ec30.co.uk), also see [www.ec30.co.uk](http://www.ec30.co.uk). EC30, Recreation Ground Rd, Tenterden.

Open: Mon- Fri 9am – 4pm; Sat 10am to noon.

The Tenterden Family Foodbank EC30 times as above.

Food boxes for people suddenly in difficulty due to late credit payments, unexpected bills, loss of job etc.

[info@themildredtrust.org](mailto:info@themildredtrust.org) or [info@ec30.co.uk](mailto:info@ec30.co.uk), phone 07745 694748

Emergencies only please call: 07805 840493

### **Community Fridge**

Open in the entrance hall at the Leisure Centre seven days a week during centre opening hours. Community facility everyone welcome to donate surplus perishable food or to collect some. This reduces food waste and food insecurity. Details of acceptable donations are on the fridge: fresh perishable goods that are within the use-by date only. No fresh meat, butchery or fish.

### **Community Shop**

Leisure Centre every Monday, 1.45-2.45pm. Freely available to ANYONE finding it hard to make ends meet. No eligibility criteria. Select groceries to the value of £20 and only pay £6. Cash only.

### **Old Schoolhouse Larder**

Free non-perishable groceries, household and hygiene goods for families with children under the age of 18. Fresh bread, milk and vouchers for fruit and vegetables are often available. Tuesdays at Tenterden Leisure Centre from 5.15-6.15pm and The Family Hub, Recreation Ground Road on Fridays from 9.30-10.30am.

### **Regular Events**

For those living with short-term memory loss and their supporters

- Memory Café and Friends every Friday  
Meets every Friday 2 – 4pm at St Andrews Church Hall,  
Ashford Road, Tenterden
- Musical Memories meets every Tuesday 10:45am – 12 noon  
Highbury Hall, Highbury Lane, Tenterden,  
a singing for health group.
- Monthly Lunch Club Meets 4th Wednesday 1:15 for 1:30pm  
Groves Restaurant, Tenterden Garden Centre Reading St.

For all 3: Contact Jan Bridger

Tel: 01580 762932 Mob: 07445971791

**Tenterden Parkinsons Café** Please note that the monthly Parkinson's Support Group meeting is now scheduled in the afternoon between 2:30-4pm every third Monday of the month.

We are still meeting at the EC30 cafe at Tenterden Recreation Ground Road (next to Ivy Court Surgery).

CARM Rolvenden Meeting Point, every second Wednesday 10:00am to noon in Monypenny Lounge, drop in and meet friends old and new.

<https://carmromneymarsh.org.uk/>



# NSPCC



## Talk to the NSPCC

For advice and support about a child,  
or to report a concern, talk to us.  
It's free and you don't have to say who you are.

**0808 800 5000**

**[help@nspcc.org.uk](mailto:help@nspcc.org.uk)**   **[nspcc.org.uk/helpline](https://nspcc.org.uk/helpline)**

**EVERY CHILDHOOD IS WORTH FIGHTING FOR**

©2019 NSPCC. Photography by Tom Hunt. The child pictured is a model. Registered charity England and Wales 235401, and Scotland SC027717, 220181119.

PARKINSON'S<sup>UK</sup> CHANGE ATTITUDES. FIND A CURE. JOIN US.



# Parkinson's Café, Tenterden

We meet every 3rd Monday in the month.

10.30am - 12pm

EC30 Café - Recreation Ground Road,  
Tenterden TN30 6RA

Join us for a friendly social gathering for people affected  
by Parkinson's. Partners, family and friends welcome.



## Refuse Collection

Waste food bins, small black with orange lid, are emptied weekly. All other bins, grey, green and brown are emptied fortnightly. To see which of your bins are emptied when type 'Ashford BC Find my bin' into your web browser. You have 2 search tools:

- Grey (household) or Green (recycling)
- Brown (Garden refuse)

You can also download a calendar.

Collection dates do not vary through the year except across the Christmas New Year Holiday season.

Please keep an eye out for neighbours who may not be connected to the web. If neighbours are not getting the bins right have a friendly word and tell them which bins to put out when.

For new arrangements on such things as clothes, shoe and electrical items please see the Ashford BC – How do I dispose of?

- Yellow sacks, where supplied, will be collected weekly
- For all queries about recycling or waste disposal:

On-line, see ABC website: [www.ashford.gov.uk/waste](http://www.ashford.gov.uk/waste)

Telephone ABC on Tel 01233 330646

---

Our parishes lie in the Parliamentary constituency of the Weald of Kent

Our MP is Katie Lam

Email: [katie.lam.mp@parliament.uk](mailto:katie.lam.mp@parliament.uk)

Office tel: 01580 388 344

Website: <https://www.katieforkent.com/>

### NEWENDEN PARISH COUNCIL

[www.newenden-pc.gov.uk/](http://www.newenden-pc.gov.uk/)

Parish Clerk: Mrs Lauren Dobson.

C/o Carpens, Hobbs lane,

Beckley. East Sussex, TN31 6TT

Telephone: 01797 260364

e-mail: [enquiries@newenden-pc.gov.uk](mailto:enquiries@newenden-pc.gov.uk)

*Parish Council will meet at 7:00pm*

*15th July in St Peter's church.*

### ROLVENDEN PARISH COUNCIL

[www.rolvendenparishcouncil.org.uk](http://www.rolvendenparishcouncil.org.uk)

Parish Clerk: Mrs Louise Goldsmith,

5 Artisan Road, Headcorn, TN27 9AZ

Telephone: 07900 693572

email:

[clerk@rolvendenparishcouncil.gov.uk](mailto:clerk@rolvendenparishcouncil.gov.uk)

*Parish Council will meet at 7:30pm*

*17th July in Rolvenden Village Hall.*

*Members of the public have a statutory right to attend  
as observers. At the discretion of the Parish Council  
Chair people may be invited to speak.*

# The White Hart, Newenden



*A family run business for the past 25 years*

**A fantastic place to eat, drink & stay**

Homemade food

Steak dry aged on the premises

Traditional Sunday roast dinners

Cask ales & quality wines

Ensuite B&B rooms

**The perfect venue for all occasions**

**Looking forward to welcoming you to The White Hart!**

The White Hart, Rye Road, Newenden, Kent TN18 5PN

Email: [reservations@thewhitehartnewenden.co.uk](mailto:reservations@thewhitehartnewenden.co.uk)

**Tel: 01797 252166 [www.thewhitehartnewenden.co.uk](http://www.thewhitehartnewenden.co.uk)**

## K Jones Electrical Commercial • Domestic • Industrial

Jones Family Electricians Trusted Locally  
For Over 40 Years NIC/Eic Accredited



.Landlords, home buyers electrical installation safety certificates.

. Free estimates for rewire refurbishment, new build projects, Solar PV AND CCTV

Call for quote/estimation on 01580 848118 [kevin.kjoneselectrical@gmail.com](mailto:kevin.kjoneselectrical@gmail.com)

Call for a Free quote on 01580 848118 [kevin.kjoneselectrical@gmail.com](mailto:kevin.kjoneselectrical@gmail.com)





James Dyer

Cabinet Making  
&  
Carpentry

Product & Furniture Design BA (Hons)  
City and Guilds 5780 – 30 Level 3 Diploma  
in Furniture Making and Design.

Jamesdyerdesigns@outlook.com

www.jamesdyerdesigns.com

07701014338

CAD

Design & Machining services available.

# Tree Stump Removal Service

Free Quotation · Fully Insured  
35 years experience

**M J M Forestry**

**01580 291984**

## The Ewe & Lamb A Proper Village Pub



Open 7 days a week  
serving traditional pub  
food & a fine  
selection of real ales.  
Check out our website  
or social media for  
more information.

[www.theeweandlamb.co.uk](http://www.theeweandlamb.co.uk)

01580 241429



# Grattarola Gilchrist

**Red Book valuations and bespoke commercial property advice throughout Kent and the South East.**

Local owner run business - Claudia Grattarola is an experienced Chartered Surveyor and Registered Valuer providing a quality commercial valuation service for a wide variety of purposes and carefully tailored to each client's needs.

Initial, no obligation enquiries welcomed from owners and tenants of all commercial property and their advisors, solicitors, accountants and pension fund managers.

---

**claudia@grattarola-gilchrist.co.uk  
07816449623**



Refurbishments, Renovations, Restorations

Carpentry – Joinery – Plastering – Tiling – Kitchens – Bathrooms – Landscaping  
Brickwork – Traditional restorations

Jason Hollands leads a small team of professional, reliable and conscientious craftsmen with a reputation for quality work. We understand that undertaking a renovation or building project is a big decision. We pride ourselves on our clean and tidy sites, ensuring that your project is delivered with as little impact to you and your property as possible.

Lower Winsor Cottage, Mounts Lane, Rolvenden Layne, Cranbrook, Kent TN17 4NN  
Phone 07787 524836 [jasonhollands@outlook.com](mailto:jasonhollands@outlook.com)



Phone: 01580 241369

# THE STAR

GOOD FOOD  
GOOD DRINK  
GOOD PUB

“A hidden gem”

**A family run and owned Freehouse, with a fantastic enclosed rear garden, and stunning rural views located in Rolvenden High Street.**

[www.starrolvenden.co.uk](http://www.starrolvenden.co.uk)

## KIBBLEWHITE GARDENS



Garden Construction  
*and* Landscape  
Specialists

Professional Garden Maintenance

**ESTABLISHED FOR OVER 60 YEARS**

Our business has grown on recommendation, due to attention to detail and consistently high standard of workmanship carried out by our own staff.

**HAVE THE JOB DONE PROPERLY**

**SANDHURST: 01580 850394 [www.kibblewhitegardens.co.uk](http://www.kibblewhitegardens.co.uk)**

# BUTLER HOUSE CARPETS & RUGS

*We also offer a bespoke rug service*

High Street, Cranbrook, Kent, TN17 3DN

01580 712149

[www.butlerhouse.co.uk](http://www.butlerhouse.co.uk)

## Webb's (Tenterden) Ltd.

45/51 High Street, Tenterden 01580 762132

\*\*\*\*\*

✿ DIY Garden Tools ✿ Mowers (Sales and Repairs) ✿

✿ Cookware Specialists ✿ Garden Furniture ✿

✿ Table Furnishings ✿ Tools ✿ Bed Linen ✿

✿ New Babywear Department ✿ Gifts with a difference ✿

\*\*\*\*\*

[www.webbsoftenterden.com](http://www.webbsoftenterden.com)

[mail@webbsoftenterden.com](mailto:mail@webbsoftenterden.com)





**We're passionate about creating and maintaining beautiful outside spaces.**



### **Tompsett Landscaping**

A well designed and maintained garden or outdoor space can do amazing things for your home or business.

Whether you want to make the most of your garden, give your customers an excellent experience or even add value before a sale Tompsett Landscaping are the landscaping company to make it happen.

We are a Kent based landscaping company operating throughout Kent, London and the South East providing a whole host of landscaping, garden and grounds maintenance services to commercial companies, private clients and parish councils.

Please contact us today for your free no obligations quotation

✉ [info@tompsettlandscaping.co.uk](mailto:info@tompsettlandscaping.co.uk)

🌐 [tompsettlandscaping.co.uk](http://tompsettlandscaping.co.uk)

📞 Rob Tompsett: 07961637275

📞 Nick Tompsett: 07746672946



## **CRANBROOK MUSEUM**

**AND LOCAL HISTORY SOCIETY C.I.O.**

Open April to October. Tuesday to Saturday 2pm - 4.30pm  
also every Sunday in August

**VISIT FREE**

*Donations welcome*

Three floors of exhibits in 15th Century building with cottage garden

'Wheels of Time'

Children's History Detective Trail

### **EXHIBITIONS 2025**

**APRIL and MAY**

The history of Cranbrook's Union Mill

**JUNE, JULY and AUGUST**

A look back at Cranbrook's Majorettes

**SEPTEMBER and OCTOBER**

Youthful Perspectives - Local history projects from Cranbrook School

Carriers Road, Cranbrook, Kent TN17 3JX  
[www.cranbrookmuseum.org](http://www.cranbrookmuseum.org) Facebook @cranbrookmuseum



# THE WRIGHT WAY

## Painters & Decorators



Our team are fully qualified and use modern painting systems to ensure we bring you a flawless finish every time. On the larger jobs our team will work together, ensuring you get your home back sooner.

Tel: 01580 713599

[www.the-wrightway.com](http://www.the-wrightway.com)

Mob: 07856 947840



### *Re-Spect Hair Studio*

Rolvenden's first  
Sustainable,  
Eco-Friendly Salon.

For everyone - Men, Women  
& Children are all welcome.

Trafalgar Barn, Regent Street,  
Rolvenden 01580 243041  
Instagram: re\_specthairstudio



### Hole Park

Feel at home in  
our garden

Our gardens are renowned  
for spectacular seasonal  
displays and are open from  
**1st April to 31st October**  
on selected dates.

Benenden Road, Rolvenden TN17 4JA

[www.holepark.com](http://www.holepark.com)



## WHERE WATER GARDENING COSTS YOU LESS!

- Thousands of high quality tropical and fresh water fish
- Huge range of aquatic plants with lilies, marginal and bog plants
- Half price pond pumps and pond liners



- Vast rang of pre-formed ponds
- Hundreds of ornamental statues
- Beautiful walk around display gardens
- Coffee shop and free car park

Talk to us on 01580 241771

ON THE A28 1 MILE SOUTH OF ROLVENDEN



# VALE & MARSH

As a licensed Propertymark Agent, at Vale and Marsh (formerly Weald Property) we possess extensive knowledge and experience in every aspect of residential property. It's what we've been doing since 1985 and it's why we've been so successful. Our friendly and committed team are incredibly passionate and conscientious, serving our clients impeccably, offering sound and expert advice on buying, selling, letting and property management. Our highly motivated team are dedicated and driven, working with energy, conviction and passion. We ensure all transactions are handled with the utmost professionalism and skill, because we feel outstanding customer care matters.

**To put your property in safe hands,  
please call Alex Norwood Hill on 01580 242700. [www.valeandmarsh.com](http://www.valeandmarsh.com)**





## Try our professional Home News Delivery service

**New customer introductory  
offers available**

Have your paper delivered before you go to work and  
read it with your breakfast!

- ✓ Early delivery - before 6.30am (7.30am at weekends)
- ✓ Excellent communication - phone or email ALWAYS responded to
- ✓ Different billing options available
- ✓ All national and local newspapers available to order
- ✓ All magazines available to order
- ✓ Well established reliable company with over 4,400 customers

**Place your order today by telephone on  
01580 763183**

or email us at [mail@jackiesnews.co.uk](mailto:mail@jackiesnews.co.uk)  
or go to [www.jackiesnews.co.uk/place-your-order](http://www.jackiesnews.co.uk/place-your-order)





# 125

— YEARS OF —

## Lambert & Foster



**Cranbrook Road, Benenden**  
Guide Price £925,000



**Bridewell Lane, Tenterden**  
Guide Price £175,000



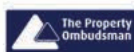
**Ashford Road, High Halden**  
Guide Price £390,000



**Rye Road, Sandhurst**  
Guide Price £425,000

Call **01580 712 888**, visit **[www.lambertandfoster.co.uk](http://www.lambertandfoster.co.uk)**  
or email **[cranbrook@lambertandfoster.co.uk](mailto:cranbrook@lambertandfoster.co.uk)**

*Professionally endorsed for your peace of mind*



arla | propertymark

naea | propertymark



Lineage Advertisement £20 for a year.  
February to December  
Email judyannvinson@gmail.com

.....

### HANDMADE RUGS

Beautiful showroom in the historic town of Rye. A huge selection of traditional and contemporary styles, Afghan, Persian, Indian and Nepalese. We also offer a bespoke service.  
The Old Bank, 84 High Street, Rye East Sussex, TN31 7JP 01797 360353  
email: rye@handmaderugs.co.uk  
www.handmaderugs.co.uk

.....

### HEATING ENGINEER

Mark Clifton Plumbing and heating,  
GASSAFE and OFTEC registered.  
07831749725 mark@cliftonheat.co.uk  
Natural gas and oil heating, Boiler changes, cylinders, radiators, bathrooms and kitchen works.

.....

### HOUSE CLEARANCE

Cindy's Antiques 07753 836305

.....

### MATHS TUTOR

11+, SATS, GCSE and A level  
Liz Hopkins BSc(Hons) PGCE QTS CELTA  
077481 30134 or Email: liz@tenterdentuition.co.uk Now offering online tuition

.....

### KNOLL PROPERTY SERVICES

All aspects of decorating interior and exterior, wallpapering a specialty. Also carpentry, window, and door renovation. Wall and floor tiling. City & Guilds (decorating). Fully insured. Call Alan for a quotation and advice. 01797 458164. Mobile 07804969256

.....

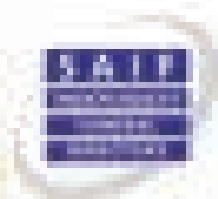
# T.W. Fuggle & Son.

FUNERAL DIRECTORS



**- ESTABLISHED 1930 -  
AWARD WINNING  
INDEPENDENT  
FAMILY RUN  
FUNERAL DIRECTORS**

**ALL TYPES OF FUNERAL ARRANGEMENTS  
DIRECT TO CREMATION  
TENTERDEN AND SURROUNDING AREAS**



PROUD MEMBERS OF NATIONAL ASSOCIATION OF FUNERAL DIRECTORS



[www.twfuggle.co.uk](http://www.twfuggle.co.uk)



01580 763340



[office@twfuggle.co.uk](mailto:office@twfuggle.co.uk)



01580 766003

20 ASHFORD ROAD, TENTERDEN, KENT. TN30 6QU



# 'My Village Store'

Telephone: 01580 241314



\* Groceries \* Fruit & Veg \* Off Licence \* Bacon  
\* Cheese \* Delicatessen \* Home Cooked Meats  
\* Tobacconist & Newsagent \* Lottery



IN-STORE POST OFFICE Telephone: 01580 241245

## Carpets & Floors

Carpet and Vinyl Flooring supplied and fitted.  
Same choice as any shop but at up to half the price.



We can move your  
furniture for you and  
take away your old carpet

For free home sample viewing and estimates  
please call Stuart or Lisa on 01424 855882 / 07734 659834  
Email: [bargainfloors@hotmail.co.uk](mailto:bargainfloors@hotmail.co.uk)

[www.bargainfloors.co.uk](http://www.bargainfloors.co.uk)

PROUD MEMBERS OF  
**Checkatrade.com**  
Where reputation matters

## TENTERDEN ROOFING COMPANY

Specialists in Tiled Roofs  
Old & Period Roofs — Clay & Slate  
Leadwork & Chimneys  
Conservation Roof Lights & Dormers

Phone: 01233 860301  
07921 509564

71 Lower Road Woodchurch Ashford Kent TN26 3SG



Uncomplicated,  
trustworthy and  
confidential advice  
if you are selling  
or letting ■

Ashford: 01233 506260 Tenterden: 01580 766766

[www.hobbsparker.co.uk](http://www.hobbsparker.co.uk)